

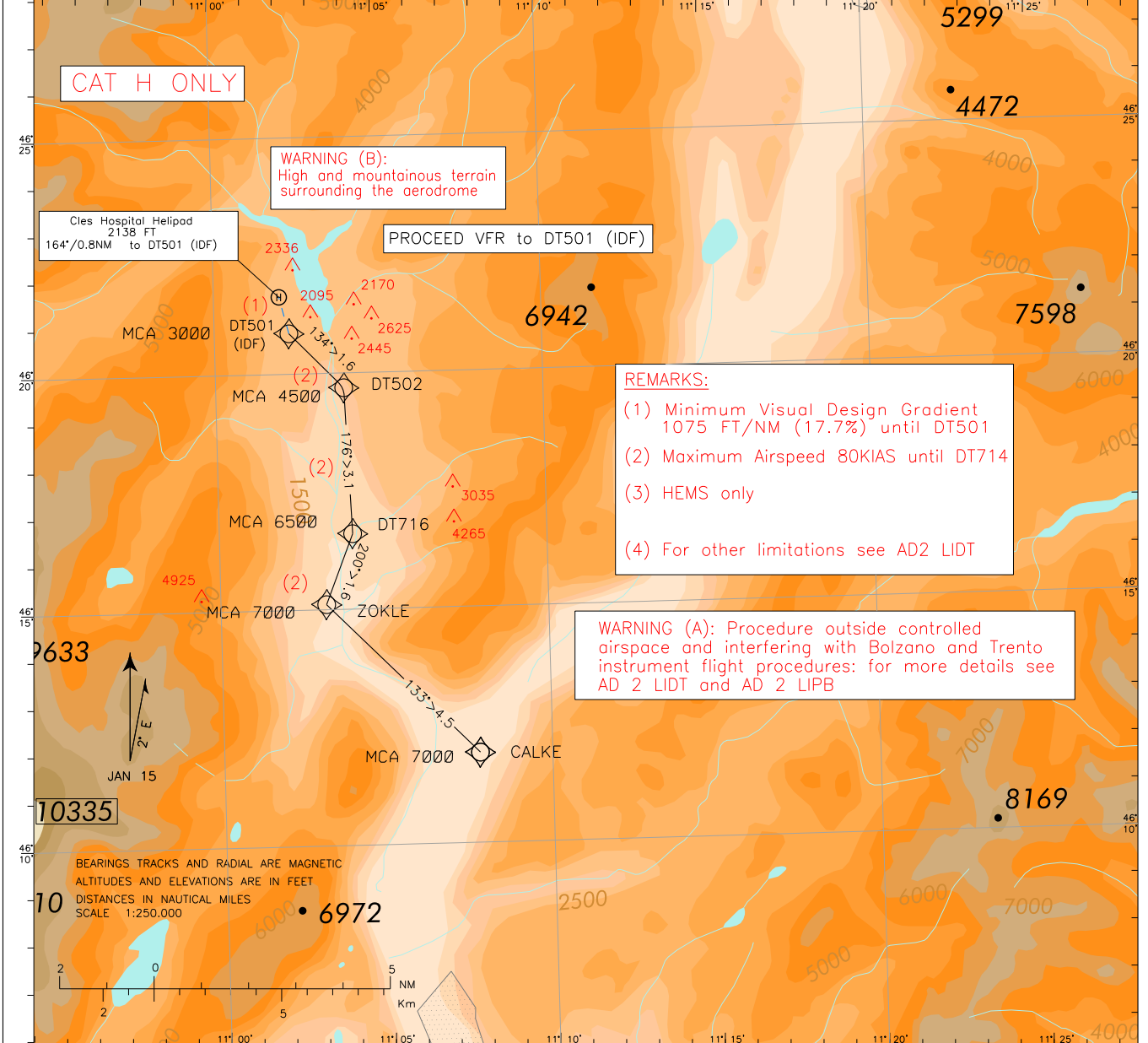
ICAO – STANDARD INSTRUMENT DEPARTURE CHART

AD 3 LIKC 6-1

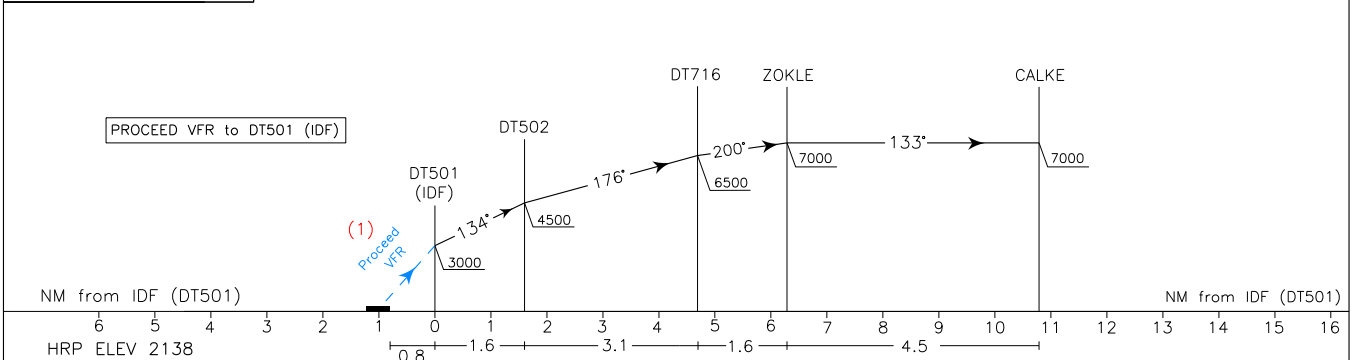
DOC 8168 ED 6 – 2014 AMDT 7

CHANGE: CLES ICAO CODE ADDED

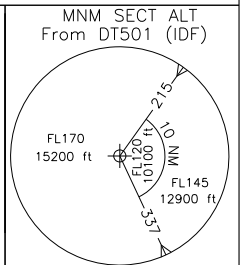
Remarks: (5) EGNOS/SBAS augmentation required (6) RNP 1 required	Padova ACC	120.725	HELIPAD ELEV	Cles Hospital (LIKC) RNP CALKE Departure
	Padova FIC	124.150	2138	
	AFIS Trento Aerodrome Info	119.650		
	AFIS Bolzano Aerodrome Info	120.600		



TRANSITION ALT 10000



	Min Climb (FT/NM)	FT/min at GS				Take off minima	
		60	70	80	90	CEILING	VISIBILITY
Visual to DT501	1075 (17.7%)	1075	1255	1435	1615	----	----
DT501 to DT502	915 (15.1%)	915	1070	1225	1375	----	----
DT502 to DT716	645 (10.6%)	645	750	860	965		
DT716 to ZOKLE	310 (5.1%)	310	360	415	465		



Cles Hospital (LIKC) RNP CALKE Departure

Path Terminator	Waypoint identifier	Flyover	Course/Track °M (°T)	Turn Direction	Altitude Constraint (ft)	Speed Limit (kt)	Leg Distance (NM)	Navigation Specification
IF	DT501 (IDF)	-	-	-	+3000	80	-	RNP 1
TF	DT502	-	134 (136.0)	-	+4500	80	1.6	RNP 1
TF	DT716	-	176 (178.0)	-	+6500	80	3.1	RNP 1
TF	ZOKLE	-	200 (201.6)	-	+7000	80	1.6	RNP 1
1TF	CALKE	-	133 (135.3)	-	+7000	-	4.5	RNP 1

Waypoints Table formatted according ARINC 424 standards

Waypoint	Latitude	Longitude
DT501	N46205145	E011021680
DT502	N46194118	E011035484
DT716	N46163571	E011040424
CALKE	N46115425	E011074756
ZOKLE	N46150647	E011031328