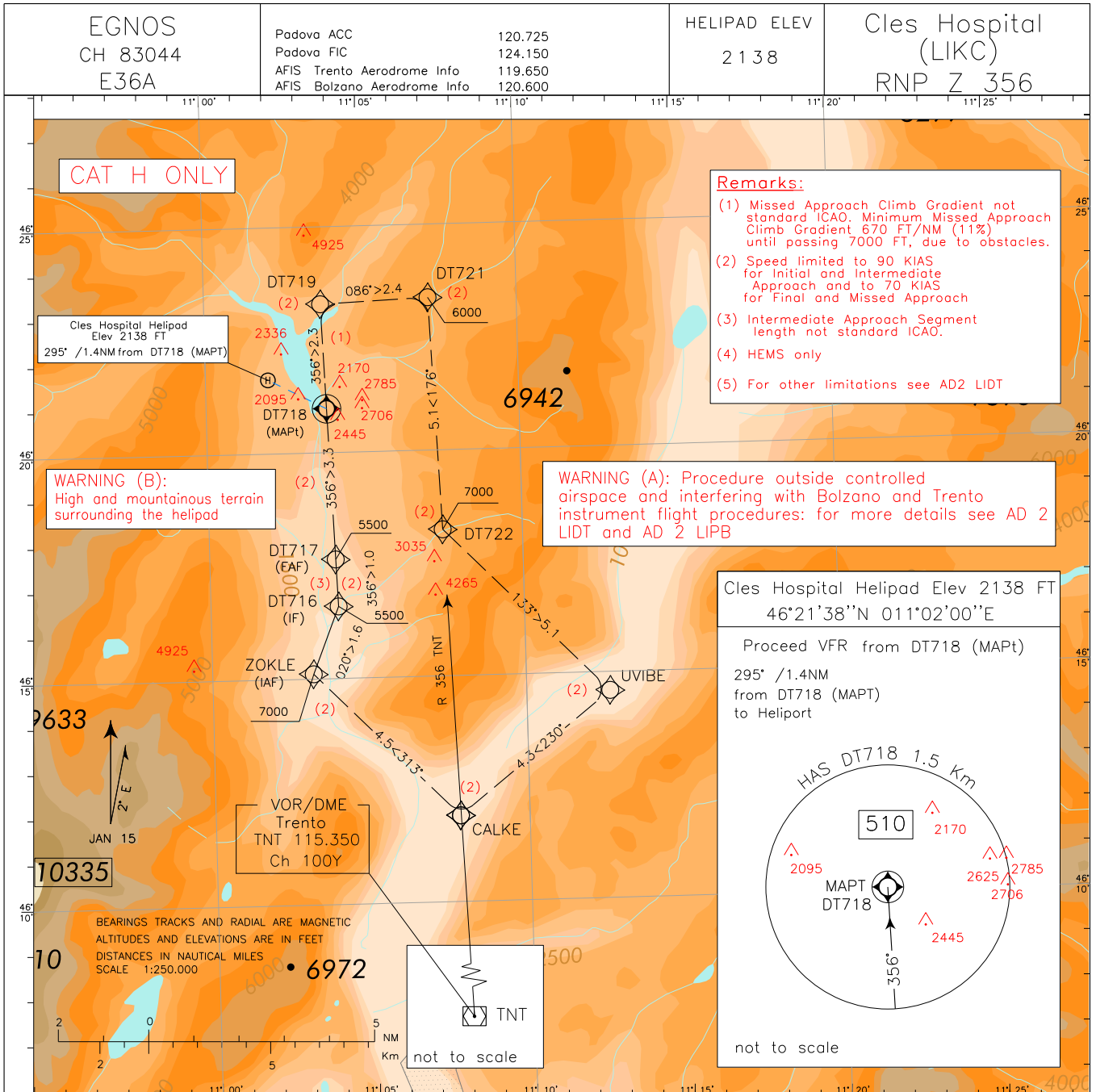
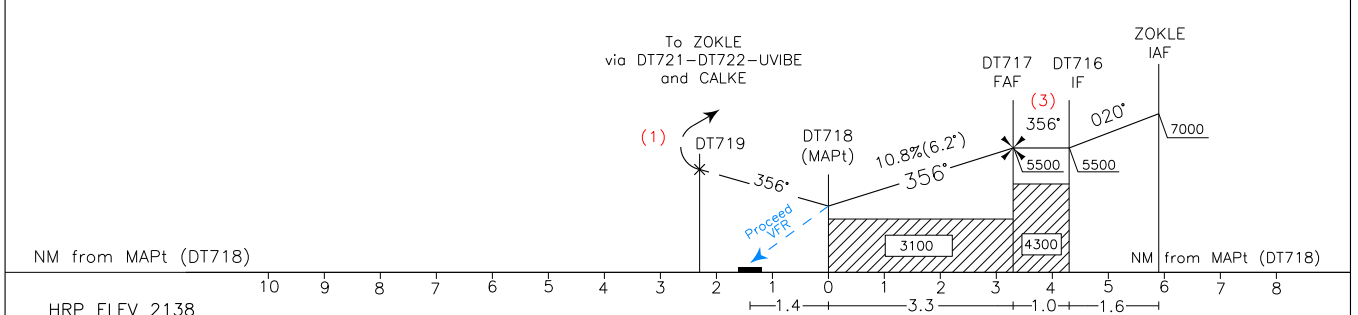


DOC 8168 ED. 6 – 2014 AMDT 7 (1) (3)

CHANGE: CLES ICAO CODE ADDED



TRANSITION ALT 10000 MISSED APPROACH: (1) Proceed on TR 356° climbing to 7000 FT. At DT719 turn right on TR 086° to DT721 then turn right on TR 176° (RDL 356 TNT VOR) to DT722 (D17 TNT DME) to be left on TR 133° bound to UVIBE, then proceed via CALKE, ZOKLE. IAS MAX 70 Kt during Missed Approach turns.



OCA (OCH)	CAT H	GS	FT PER MIN	MNM SECT ALT From DT718 (MAPt)	
				FAF-MAPT	ALT(HGT)
LPV	3300 (1162)	90	988	3.3 NM	5276(3138)
		80	878	2:12	4617(2479)
		70	768	2:28	3960(1822)
		60	659	2:50	
				3:18	

## Cles Hospital (LIKC) RNP Z 356 – Instrument Approach Procedure

Path Terminator	Waypoint identifier	Flyover	Course/Track °M (°T)	Turn Direction	Altitude Constraint (ft)	Speed Limit (kt)	Leg Distance (NM)	Navigation Specification
IF	ZOKLE	-	-	-	+7000	90	-	RNP 1
TF	DT716	-	020 (021.6)	-	+5500	90	1.6	RNP 1
TF	DT717	-	356 (358.0)	-	+5500	90	1.0	RNP APCH
TF	DT718 (MAPt)	Y	356 (358.0)	-	@3300	70	3.3	RNP APCH
TF	DT719	-	356 (358.0)	-	-	70	2.3	RNP APCH
TF	DT721	-	086 (087.8)	-	+6000	70	2.4	RNP 1
TF	DT722	-	176 (177.8)	-	+7000	-	5.1	RNP 1
TF	UVIBE	-	133 (135.3)	-	-	70	5.1	RNP 1
TF	CALKE	-	230 (231.6)	R	-	70	4.3	RNP 1
TF	ZOKLE	-	313 (315.3)	-	+7000	90	4.5	RNP 1

## Waypoints Table formatted according ARINC 424 standards

Waypoint	Latitude	Longitude
CALKE	N46115425	E011074756
ZOKLE	N46150647	E011031328
DT716	N46163571	E011040424
DT717	N46173805	E011040108
DT718	N46205830	E011035092
DT719	N46231718	E011034387
DT721	N46232274	E011071014
DT722	N46181432	E011072732
UVIBE	N46143526	E011123956

## SBAS FAS DATA BLOCK CLES HOSPITAL RNP Z 356

PARAMETERS	VALUES
Operation Type	0
SBAS Provider	1 (EGNOS)
Airport Identifier	LIKC
Runway	36
Runway Letter	0
Approach Performance Designator	0
Route Indicator	Z
Reference Path Data Selector	0
Reference Path Identifier	E36A
LTP/FTP Latitude	462124.1920N
LTP/FTP Longitude	0110349.6070E
LTP/FTP Ellipsoidal Height (metres)	701.3
FPAP Latitude	462251.4265N
Delta FPAP Latitude (seconds)	87.2345
FPAP Longitude	0110345.1745E
Delta FPAP Longitude (seconds)	-4.4325
Threshold Crossing Height	878.8
TCH Units Selector	0 (feet)
Glidepath Angle (degrees)	6.20
Course Width (metres)	105.00
Length Offset (metres)	0
HAL (metres)	40.0
VAL (metres)	50.0

OUTPUT DATA	
Data Block	10 03 0B 09 0C 24 D0 00 01 36 33 05 C0 E6 E4 13 CE 80 BF 04 65 2F 85 A9 02 5F DD FF 54 22 6C 02 64 00 C8 FA 64 5F EE 53
Calculated CRC Value	645FEE53

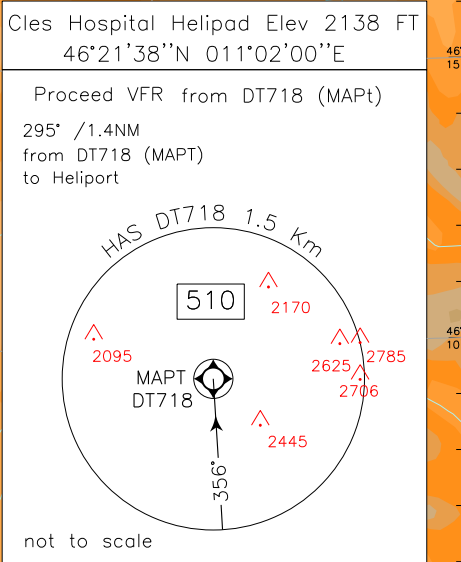
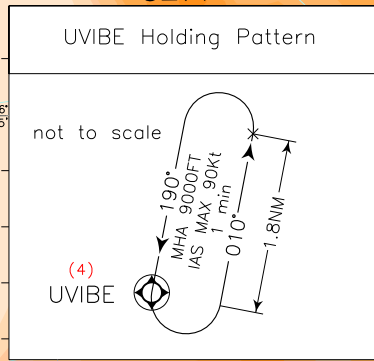
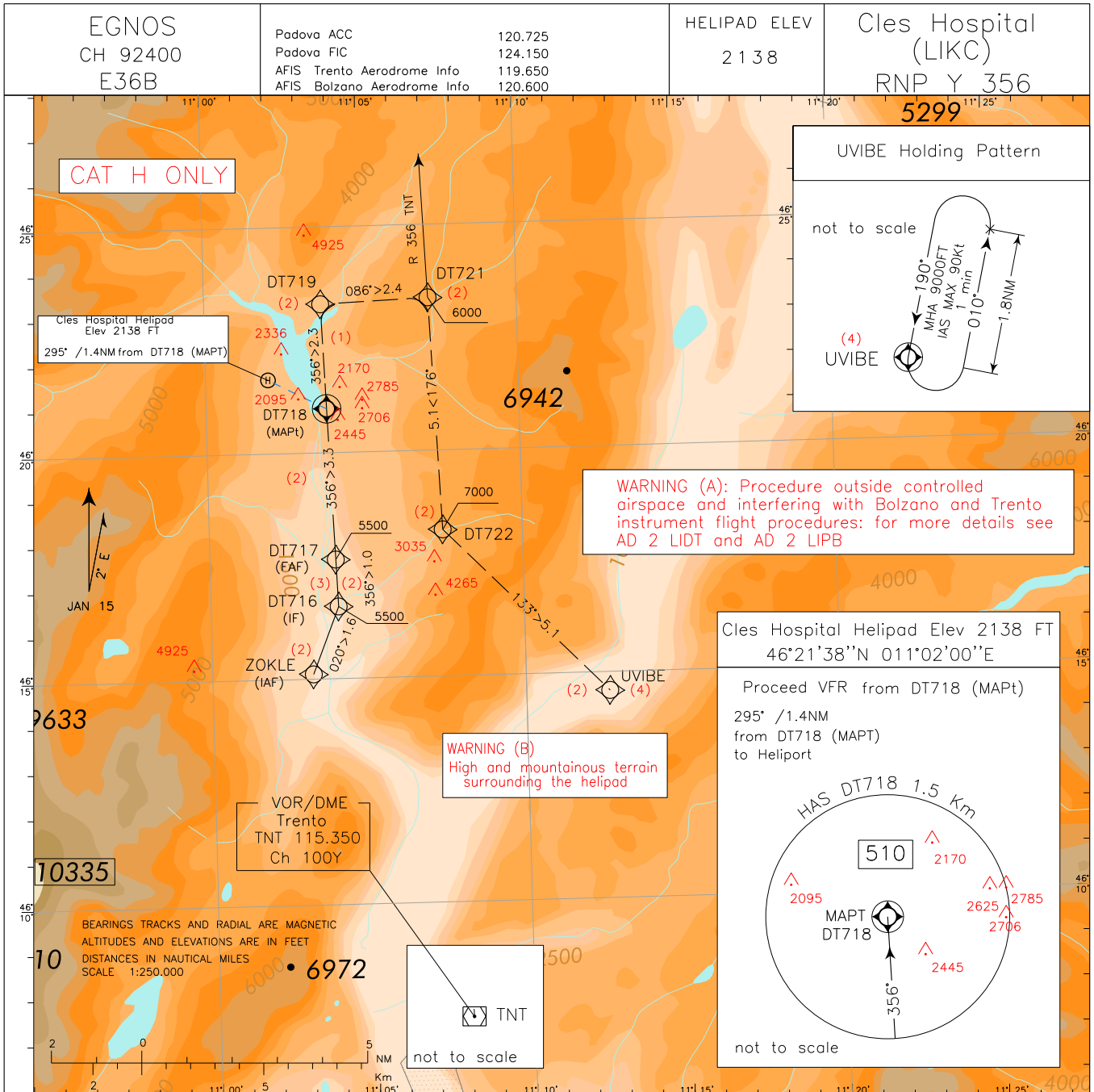
REQUIRED ADDITIONAL DATA (NOT CRC WRAPPED)	
ICAO Code	LI
LTP/FTP Orthometric Height (metres)	651.7

Intenzionalmente bianca

*Intentionally left blank*

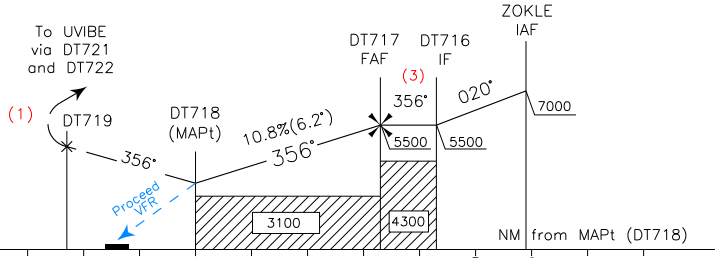
DOC 8168 ED. 6 – 2014 AMDT 7 (1) (3)

CHANGE: CLES ICAO CODE ADDED



TRANSITION ALT 10000 MISSED APPROACH: (1) (4) Proceed on TR 356° climbing to 9000 FT. At DT719 turn right on TR 086° to DT721 then turn right on TR 176° (RDL 356 TNT VOR) to DT722 (D17 TNT DME) to be left on TR 133° bound to UVIBE Holding Pattern, to be reached at 9000 FT. IAS MAX 70 Kt during Missed Approach turns.

- Remarks:**
- (1) Missed Approach Climb Gradient not standard ICAO. Minimum Missed Approach Climb Gradient 670 FT/NM (11%) until passing 7000 FT, due to obstacles.
  - (2) Speed limited to 90 KIAS for Initial and Intermediate Approach and to 70 KIAS for Final and Missed Approach
  - (3) Intermediate Approach Segment length not standard ICAO
  - (4) Leaving UVIBE Holding pattern, it is mandatory to proceed to LIDT via UVIBE Initial Approach (PinS RNP Trento/Mattarello Z and Y 166)
  - (5) HEMS only
  - (6) For other limitations see AD2 LIDT
- NM from MAPt (DT718)



HRP ELEV 2138

OCA (OCH)	CAT H	GS	FT PER MIN	FAF-MAPT	DIST DT718	ALT(HGT)	MNM SECT ALT From DT718 (MAPt)
LPV	3300 (1162)			3.3 NM	3	5276(3138)	
		90	988	2:12	2	4617(2479)	
		80	878	2:28	1	3960(1822)	
		70	768	2:50			
		60	659	3:18			

## Cles Hospital (LIKC) RNP Y 356 – Instrument Approach Procedure

Path Terminator	Waypoint identifier	Flyover	Course/Track °M (°T)	Turn Direction	Altitude Constraint (ft)	Speed Limit (kt)	Leg Distance (NM)		Navigation Specification
IF	ZOKLE	-	-	-	+7000	90	-		RNP 1
TF	DT716	-	020 (021.6)	-	+5500	90	1.6		RNP 1
TF	DT717	-	356 (358.0)	-	+5500	90	1.0		RNP APCH
TF	DT718 (MAPt)	Y	356 (358.0)	-	@3300	70	3.3		RNP APCH
TF	DT719	-	356 (358.0)	-	-	70	2.3		RNP APCH
TF	DT721	-	086 (087.8)	-	+6000	70	2.4		RNP 1
TF	DT722	-	176 (177.8)	-	+7000	-	5.1		RNP 1
TF	UVIBE	Y	133 (135.3)	-	+9000	70	5.1		RNP 1
HM	UVIBE	Y	190 (192.5)	L	+9000	90	-		RNP 1

## Missed Approach Holding RNAV UVIBE

Waypoint identifier	Inbound Course °M(°T)	Leg Distance (NM) (1)	Timing(min.)/ Waypoint Distance (NM) (2)	Turn Direction	Minimum Altitude (FT)	Minimum Altitude (FL)	Speed Limit (kt)	Magnetic Variation (°)	Navigation Performance
UVIBE	190 (192.5)	1.8	1 / -	L	9000	-	90	2.0	RNP 1

**REMARKS**

<sup>(1)</sup> RNAV system with holding functionality

<sup>(2)</sup> RNAV system without holding functionality

## Waypoints Table formatted according ARINC 424 standards

Waypoint	Latitude	Longitude
ZOKLE	N46150647	E011031328
DT716	N46163571	E011040424
DT717	N46173805	E011040108
DT718	N46205830	E011035092
DT719	N46231718	E011034387
DT721	N46232274	E011071014
DT722	N46181432	E011072732
UVIBE	N46143526	E011123956

## SBAS FAS DATA BLOCK CLES HOSPITAL RNP Y 356

Operation Type	0
SBAS Provider	1 (EGNOS)
Airport Identifier	LIKC
Runway	36
Runway Letter	0
Approach Performance Designator	0
Route Indicator	Y
Reference Path Data Selector	0
Reference Path Identifier	E36B
LTP/FTP Latitude	462124.1920N
LTP/FTP Longitude	0110349.6070E
LTP/FTP Ellipsoidal Height (metres)	701.3
FPAP Latitude	462251.4265N
Delta FPAP Latitude (seconds)	87.2345
FPAP Longitude	0110345.1745E
Delta FPAP Longitude (seconds)	-4.4325
Threshold Crossing Height	878.8
TCH Units Selector	0
Glidepath Angle (degrees)	6.20
Course Width (metres)	105.00
Length Offset (metres)	0
HAL (metres)	40.0
VAL (metres)	50.0

## OUTPUT DATA

Data Block	10 03 0B 09 0C 24 C8 00 02 36 33 05 C0 E6 E4 13 CE 80 BF 04 65 2F 85 A9 02 5F DD FF 54 22 6C 02 64 00 C8 FA 3C 6F 52 14
Calculated CRC Value	3C6F5214

## REQUIRED ADDITIONAL DATA (NOT CRC WRAPPED)

ICAO Code	LI
LTP/FTP Orthometric Height (metres)	651.7

Intenzionalmente bianca

*Intentionally left blank*