

CHANGE: SID TNT 6X MODIFIED

## SID (CAT H)

**Nota generale**

Procedure al di fuori degli spazi aerei controllati.

**General remark**

Procedures outside controlled airspace.

**OZE 5Z**

Dopo il decollo continuare prua pista (TR 358°) fino ad intercettare e seguire RDL 353 TNT VOR (TR 353°) fino al punto RDL 353/16 NM TNT VOR/DME, quindi virare a destra per intercettare e seguire RDL 225 OZE VOR per OZE VOR/DME.

**OZE 5Z**

After take-off proceed on runway heading (TR 358°) until intercepting and following RDL 353 TNT VOR (TR 353°) until point RDL 353/16 NM TNT VOR/DME, then turn right to intercept and follow RDL 225 OZE VOR bound to OZE VOR/DME.

**Nota**

**Minimo gradiente di salita 730 ft/NM (12%) fino a lasciare 4000 ft, e 523 ft/NM (8.6%) fino a lasciare 9500 ft.**

**Remark**

**Minimum climb gradient 730 ft/NM (12%) until leaving 4000 ft, and 523 ft/NM (8.6%) until leaving 9500 ft.**

MCA/MCL: RDL 353/16 NM TNT VOR/DME 9500 FT; OZE VOR/DME FL 125

**TNT 6X**

Dopo il decollo procedere su TR 193° fino ad intercettare e seguire RDL 208 TNT VOR (TR 208°) fino al punto RDL 208/17 NM TNT VOR/DME, quindi virare a sinistra per TNT VOR/DME.

**TNT 6X**

After take-off proceed on TR 193° until intercepting and following RDL 208 TNT VOR (TR 208°) until point RDL 208/17 NM TNT VOR/DME, then turn left bound to TNT VOR/DME.

**Nota**

**Causa ostacoli rilevanti situati a Sud dell'aeroporto, il decollo dovrà avvenire in VMC fino alla quota di 5000 ft ed in ogni caso mantenendo un gradiente non inferiore a 517 ft/NM (8.5%).**

**Remark**

**Due to relevant obstacles South of the airport, take-off should be performed in VMC conditions until 5000 ft and always maintaining a climb gradient not less than 517 ft/NM (8.5%).**

MCA/MCL: RDL 208/11 NM TNT VOR/DME 7000 FT; RDL 208/17 NM TNT VOR/DME 8000 FT; TNT VOR/DME FL 125

**TNT 5Z**

Dopo il decollo continuare prua pista (TR 358°) fino ad intercettare e seguire RDL 353 TNT VOR (TR 353°) fino al punto RDL 353/16 NM TNT VOR/DME, quindi virare a destra per TNT VOR/DME.

**TNT 5Z**

After take-off proceed on runway heading (TR 358°) until intercepting and following RDL 353 TNT VOR (TR 353°) until point RDL 353/16 NM TNT VOR/DME, then turn right bound to TNT VOR/DME.

**Nota**

**Minimo gradiente di salita 730 ft/NM (12%) fino a lasciare 4000 ft, e 500 ft/NM (8.2%) fino a lasciare 8200 ft.**

**Remark**

**Minimum climb gradient 730 ft/NM (12%) until leaving 4000 ft, and 500 ft/NM (8.2%) until leaving 8200 ft.**

MCA/MCL: RDL 353/16 NM TNT VOR/DME 8200 FT; TNT VOR/DME FL 125

Intenzionalmente bianca

*Intentionally left blank*

DOC 8168 ED. 6 – 2014 AMDT 7

CHANGE: REPRINTING

**Remarks:**

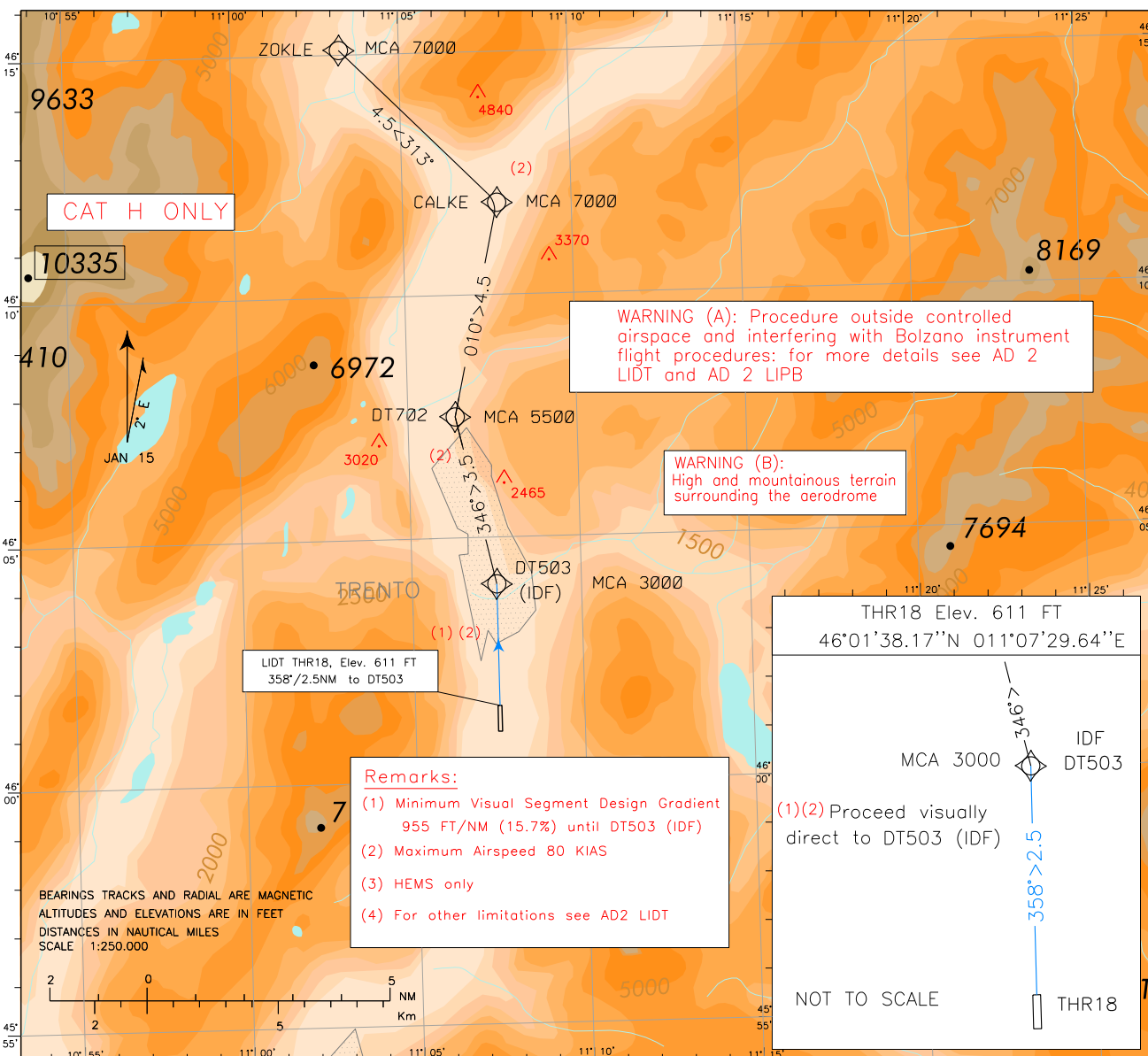
- (5) EGNOS/SBAS augmentation required
- (6) RNP 1 required

Padova ACC 120.725  
 Padova FIC 124.150  
 AFIS Trento Aerodrome Info 119.650  
 AFIS Bolzano Aerodrome Info 120.600

AD ELEV  
 610

LIDT

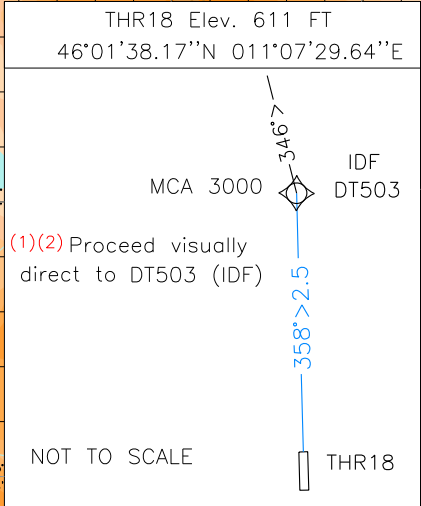
TRENTO/Mattarello  
 RNP ZOKLE Departure



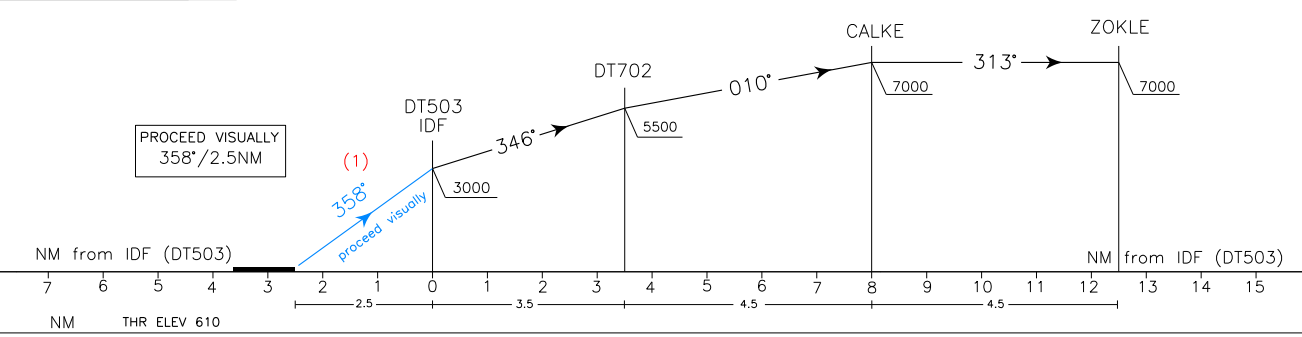
- Remarks:**
- (1) Minimum Visual Segment Design Gradient 955 FT/NM (15.7%) until DT503 (IDF)
  - (2) Maximum Airspeed 80 KIAS
  - (3) HEMS only
  - (4) For other limitations see AD2 LIDT

BEARINGS TRACKS AND RADIAL ARE MAGNETIC  
 ALTITUDES AND ELEVATIONS ARE IN FEET  
 DISTANCES IN NAUTICAL MILES  
 SCALE 1:250,000

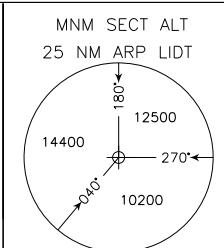
LIDT THR18, Elev. 611 FT  
 358°/2.5NM to DT503



TRANSITION ALT 10000



	Min Climb (FT/NM)	FT/min at GS			
		60	70	80	90
Visual to DT503	955 (15.7%)	955	1115	1270	1430
DT503 to DT702	705 (11.6%)	705	820	940	1060
DT702 to CALKE	335 (5.5%)	335	390	445	500



## Trento RNP ZOKLE Departure

Path Terminator	Waypoint identifier	Flyover	Course/Track °M (°T)	Turn Direction	Altitude Constraint (ft)	Speed Limit (kt)	Leg Distance (NM)	Navigation Specification
IF	DT503 (IDF)	-	-	-	+3000	80	-	RNP 1
TF	DT702	-	346 (347.5)	-	+5500	80	3.5	RNP 1
TF	CALKE	-	010 (012.5)	-	+7000	80	4.5	RNP 1
TF	ZOKLE	-	313 (315.3)	-	+7000	-	4.5	RNP 1

## Waypoints Table formatted according ARINC 424 standards

Waypoint	Latitude	Longitude
DT503	N46040333	E011072981
DT702	N46073066	E011062384
CALKE	N46115425	E011074756
ZOKLE	N46150647	E011031328